

ECLIPSE™ CLIMAPLUS™



Eclipse Panels with ClimaPlus Performance /
DONN Fineline DXF Suspension System

FEATURES AND BENEFITS

- Elegant, fine-textured visual
- Excellent noise reduction up to .70 NRC
- Optional Firecode® formulation
- Available in Optimized Recycled Content formulations to help maximize LEED recycled content contribution
- ClimaPlus™ 30-year lifetime system warranty to withstand conditions up to 49°C (120°F)/99% relative humidity without visible sag when used with DONN® Brand suspension system.

APPLICATIONS

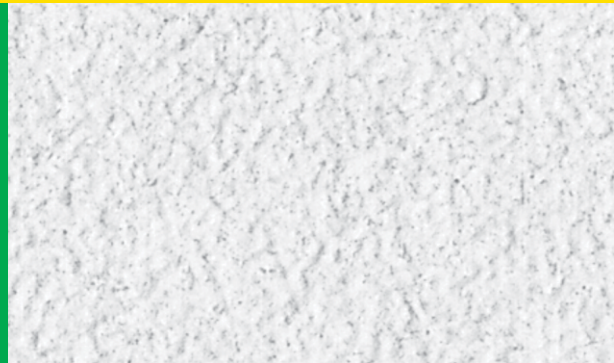
- Offices
- Conference Areas
- Healthcare
- Retail Stores

SUBSTRATE

- X-Technology mineral fiber

 High Recycled Content

Fine-textured panel



ECLIPSE CLIMAPLUS PANELS

Edge	Panel Size ⁴	Class	Item No.	NRC	CAC Min.	LR ³	Color ²	Grid Options	VOC Emissions	Anti-Mold & Mildew	Recycled Content ¹			
											Total	PC	PI	LEED RC ¹
SQ	2' x 2' x 3/4"	Class A	76575	.70	35	.86	White	A, B, C	Low		76%	0%	76%	38%
	2' x 2' x 3/4"	Class A	76575HRC	.70	35	.86	White	A, B, C	Low		82%	18%	64%	50%
	2' x 4' x 3/4"	Class A	78575	.70	35	.86	White	A, B	Low		76%	0%	76%	38%
	2' x 4' x 3/4"	Class A	78575HRC	.70	35	.86	White	A, B	Low		82%	18%	64%	50%
SLT	2' x 2' x 3/4"	Class A	76775 ⁸	.70	35	.86	White	D	Low		76%	0%	76%	38%
	2' x 2' x 3/4"	Class A	76775HRC	.70	35	.86	White	D	Low		82%	18%	64%	50%
	600 x 600 x 19 ²	Class A	ME76775	.70	35	.86	White	D	Low		76%	0%	76%	38%
	2' x 2' x 3/4"		76779	.60	35	.86	White	D	Low		63%	0%	63%	31.5%
	2' x 4' x 3/4"	Class A	78775	.70	35	.86	White	D	Low		76%	0%	76%	38%
	2' x 4' x 3/4"	Class A	78775HRC	.70	35	.86	White	D	Low		82%	18%	64%	50%
FL	2' x 2' x 3/4"	Class A	76975 ⁸	.70	35	.86	White	E, G, H	Low		76%	0%	76%	38%
	2' x 2' x 3/4"	Class A	76975HRC	.70	35	.86	White	E, G, H	Low		82%	18%	64%	50%
	600 x 600 x 19 ²	Class A	ME7697	.70	35	.86	White	E, G, H	Low		76%	0%	76%	38%
	2' x 2' x 3/4"		76979	.60	35	.86	White	F, I	Low		63%	0%	63%	31.5%
	2' x 4' x 3/4"	Class A	78975	.70	35	.86	White	E, G, H	Low		76%	0%	76%	38%
	2' x 4' x 3/4"	Class A	78975HRC	.70	35	.86	White	E, G, H	Low		82%	18%	64%	50%
BESK	12" x 12" x 3/4"	Class A	70073	.60	40	.86	White	K	Low		76%	0%	76%	38%

ECLIPSE CLIMAPLUS TILE 5,6

LEGEND

Low Emission (VOC Class) Low-Emitting performance meets CA Specification 01350 (CA Dept. of Health Services Standard Practice for the testing of VOC emissions) and is listed on CHPS data base for low-emitting materials.	CLIMAPLUS Superior Performance⁷ Contains a broad-spectrum antimicrobial additive on the face and back of the panel that provides resistance against the growth of mold and mildew.	High Recycled Content Classified as containing greater than 50% total recycled content. Total recycled content is based on product composition of post-consumer and pre-consumer (post-industrial) recycled content per FTC guidelines.	Firecode⁶ ≥ .70 NRC ≥ .38 CAC ≥ .85 LR
---	---	---	---

GRID PROFILE OPTIONS

A DX ¹ /DXL™ DXI DXII DXIII	B DXW™	C Centricitee™ DXT™	D Omega™ DXM™	E DX ¹ /DXL™ DXI DXII DXIII	F Centricitee™ DXT™	G Centricitee™ DXLT™	H Fineline ⁸ 1/8" DXFF™	I Fineline ⁸ DXLF™	K DONN™ DX Concealed

PHYSICAL DATA/ FOOTNOTES

ASTM E1264 Classification Type III, Form 1, Pattern EI ASTM E84 surface burning characteristics Class A Flame spread: 25 Smoke developed: 50 Imperial Weight 0.97 lb./ft. ² (Class A panels and tile) 1.2 lb./ft. ² (Firecode panels) Metric Weight 4.73 kg/m ² (Class A panels and tile) 5.86 kg/m ² (Firecode panels)	Thermal Resistance R-2.0 (Class A) R-1.9 (Firecode) Backloading Refer to Installation and Maintenance Maintenance Can be cleaned easily with a soft brush or vacuum.	Footnotes 1. For details, see LEED report tool at usgdesignstudio.com. 2. Metric available in white only. 3. LR values are shown as averages. 4. Not all panel sizes available in all geographic areas, some metric sizes available to order. 5. Contact USG for adhesive recommendations for 12"x12" glue-up applications.	6. Not UL Classified for acoustics. 7. Panel face and back surfaces treated with a proprietary, broad-spectrum antimicrobial additive that inhibits and retards the growth of mold and mildew. For details, see Ceiling Systems Limited Warranty Commercial Applications (CW2015).
--	---	---	---

- Short Specification:**
- Ceiling system shall comprise USG Eclipse™ ClimaPlus™ high humidity / fire resistance acoustical ceiling panels in (DONN Centricitee 15mm [9/16"] / DONN DX 24mm [15/16"] / DONN Omega 15mm [9/16"] / DONN Fineline 15mm [9/16"] / DONN Identitee 15mm [9/16"]) exposed grid including wall trim as manufactured by USG Interiors, LLC.
 - Panels shall have NRC 0.60-0.70.
 - Panels shall have CAC 35 for panels and CAC 40 for tiles.
 - Nominal size (600 x 600mm / 600mm x 1200mm) x 19mm / (2' x 2' / 2' x 4' x 3/4").
 - Edge detail shall be (Square [SQ] / Shadowline Tapered [SLT] / Fineline Bevel [FLB]) .
 - Limiting Conditions - Maximum 49°C (120°F)/99% RH.